

# CIMmultus® Monolithic Columns

Pre-Packed Preparative  
Columns for Purification  
of Large Biomolecules



## Portfolio Overview

CIMmultus® is a unique line of ready-to-use monolithic columns distinguished by wide flow-through channels and designed for fast and gentle purification of large biomolecules. CIMmultus® columns can be used as single-use disposable or multiuse columns. The polymethacrylate monolith is housed in reinforced epoxy thermoset materials coated in USP Class VI Parylene C. This gives CIMmultus® columns the structural strength of stainless steel and ensures extractables and leachables-free processing. CIMmultus® columns are cGMP compliant. Scalable from 1 mL to 40 L, CIMmultus® columns are available with 1.3 µm, 2 µm, and 6 µm channels, and a broad range of chemistries.

## Key Benefits

- Rapid, gentle, high-capacity, and high-resolution purification of large biomolecules
- Designed for processing of viruses, viral vectors, nucleic acids, LNPs, bacteriophages and VLPs
- Available with many different chemistries
- Scalable from 1 mL to 40 L
- Single batch use or multiuse
- cGMP compliant

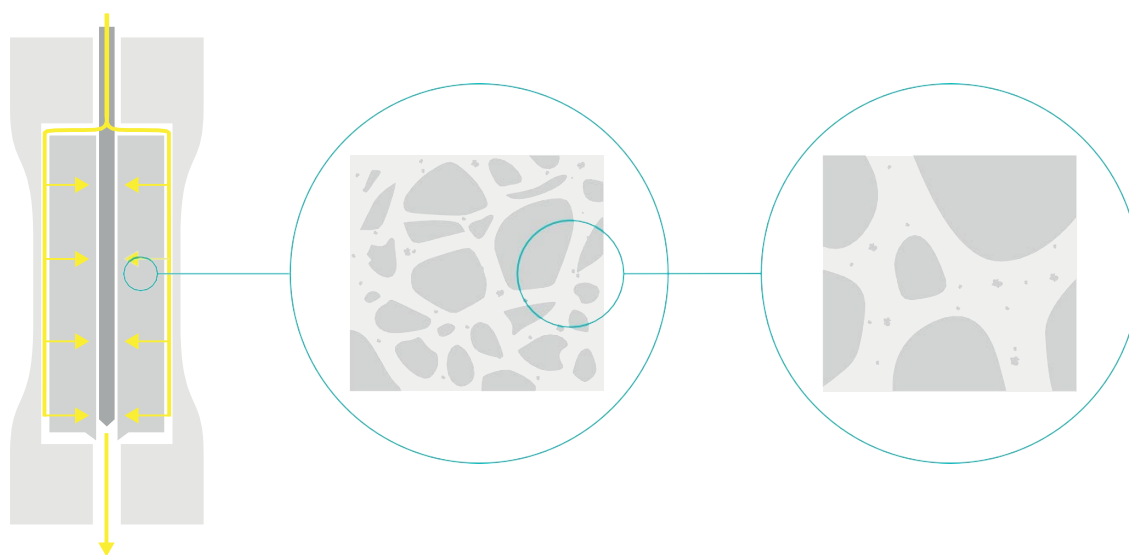
## Features | Benefits

CIMmultus® Feature	Benefit
No turbulent mixing	High resolution
Laminar flow, low shear environment	Gentle processing and high recovery
Wide uniform channels, highly accessible binding sites	High capacity for large biomolecules
High porosity	Low pressure drop, high flow rates
Convective mass transport	Flow-rate independent capacity and resolution – higher productivity, reduced processing time
	Easy scale-up
	Minimal peak broadening, excellent resolution

## Relevant Applications

CIMmultus® columns are used for the preparative purification of large biomolecules:

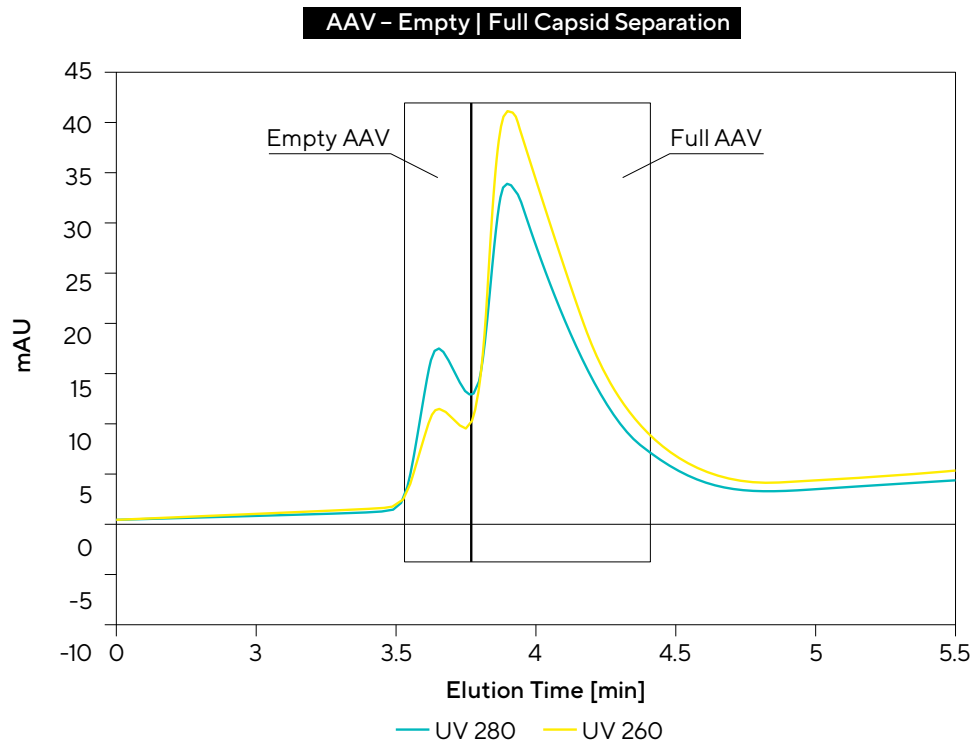
- Viruses (AAVs)
- pDNA, mRNA
- LNPs
- Lentiviral vectors (LVVs), bacteriophages, VLPs
- Large proteins, > 200 kDa, such as IgM or PEGylated proteins



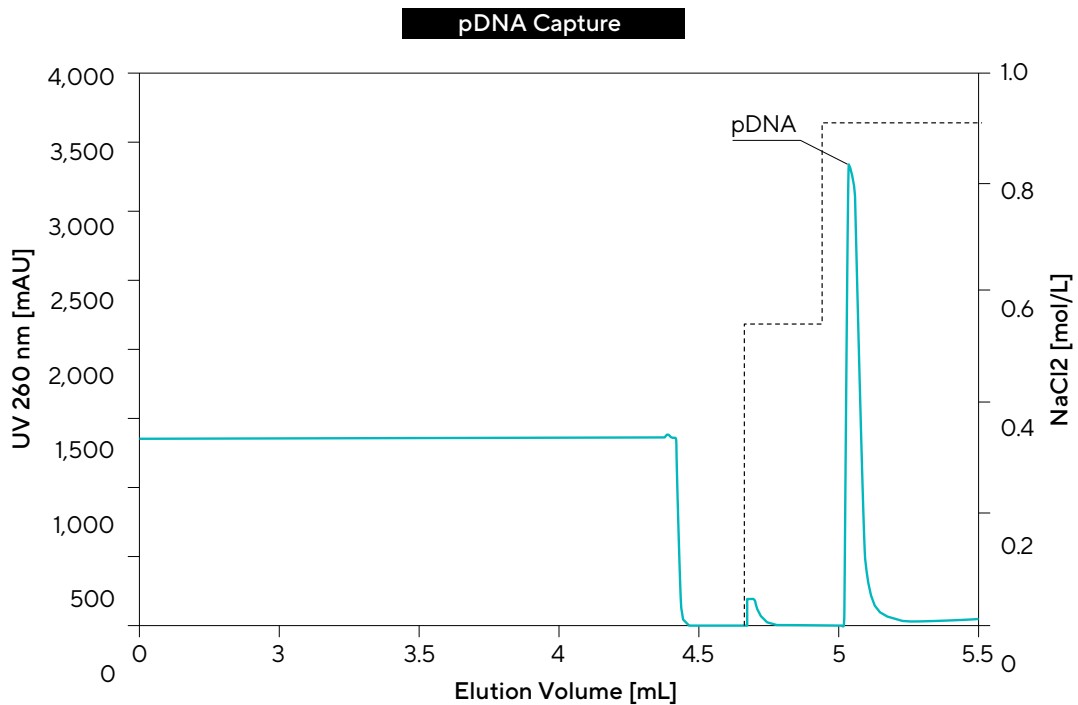
## Monolithic Chromatography Across Multiple Applications

AAV	mRNA	LNPs	pDNA	LVV	Bacteriophages
CIMmultus® QA HR	CIMmultus® Oligo dT	CIMmultus® OH	CIMmultus® DEAE	CIMmultus® QA	CIMmultus® QA
CIMmultus® SO3	CIMmultus® Swiper	CIMmultus® SDVB	CIMmultus® C4 HLD		CIMmultus® PrimaT
CIMmultus® OH	CIMmultus® C4 HLD		HiP2 Plasmid Process Pack		CIMmultus PrimaS®
CIMmultus® PrimaT	CIMmultus® SDVB				CIMmultus® OH
CIMmultus PrimaS®					

## Application Examples

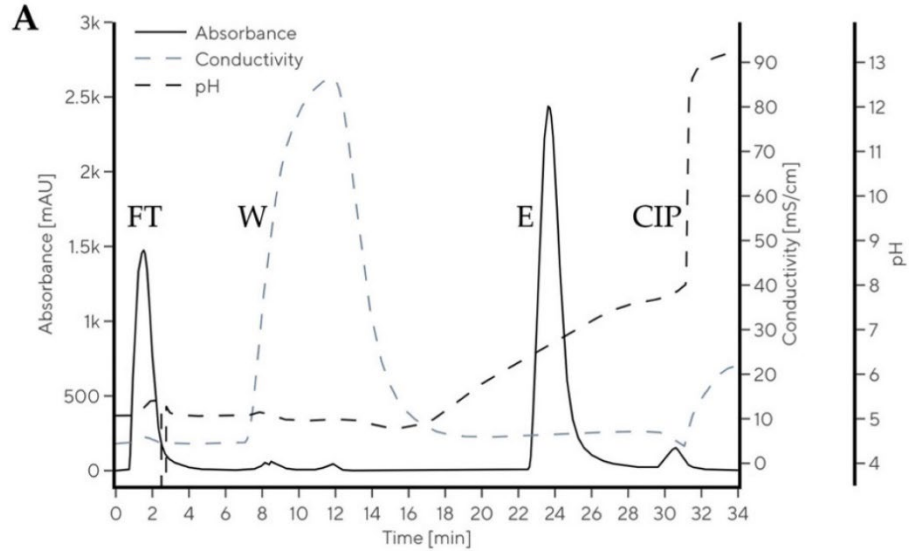


Final polishing and removal of empty AAV capsids is conducted on a CIMmultus® QA anion exchange monolith in a salt gradient at alkaline pH.



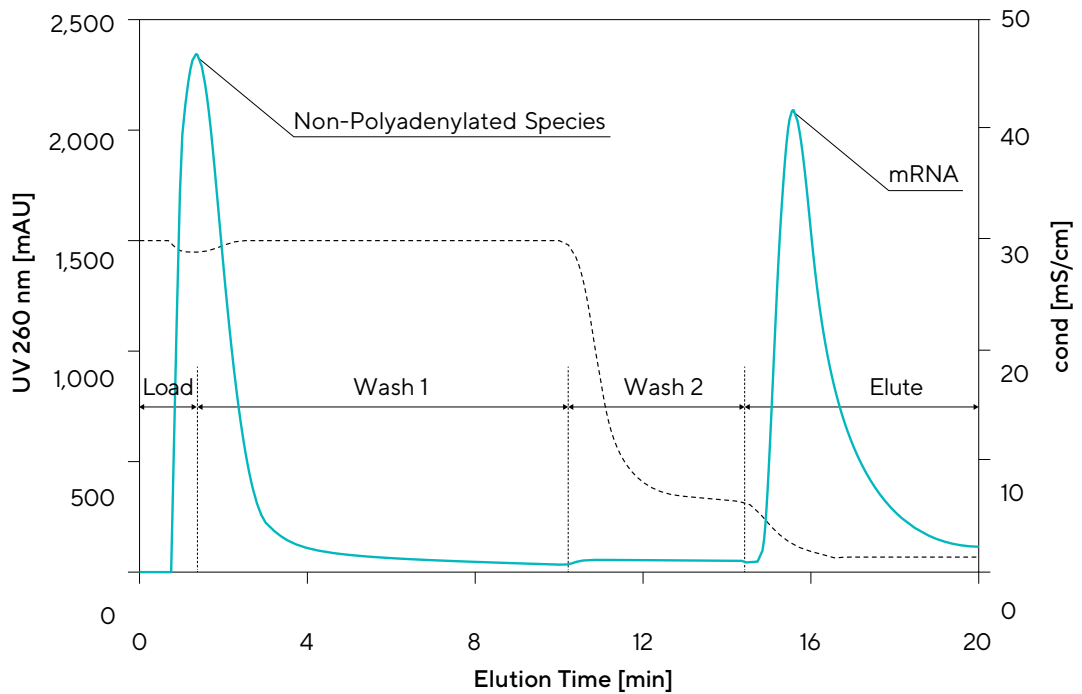
Plasmid DNA is captured on CIMmultus® DEAE, a weak anion exchange column, where remaining RNA and proteins are removed. Sample binding requires low conductivity, achieved by dilution. Elution with increasing NaCl steps elutes RNA first, followed by elution of plasmid DNA.

### mRNA non-Affinity Purification



CIMmultus® Swiper purifies polyadenylated and non-polyadenylated single-stranded RNA (ssRNA) and is particularly suitable for self-amplifying RNA (saRNA). It removes nucleoside triphosphates (NTPs), enzymes, DNA template at room temperature and neutral pH.

### mRNA Affinity Capture



CIMmultus® Oligo dT provides a single-step affinity capture of mRNA. Binding occurs through hydrogen bonding, with the oligo dT forming a stable hybrid association with the terminal poly(A) sequence of the target. Non-RNA contaminants flow through the column during sample loading.

## Relevant Process Steps

CIMmultus monoliths are employed for large biomolecule purification using multiple chemistries and across scales, from process development to production of materials for

- pre-clinical | tox studies
- clinical phases
- commercial production

CIMmultus columns are used for both capture and polishing processing steps, primarily in bind-and elute mode.

A selection of CIMmultus monoliths by chemistry:

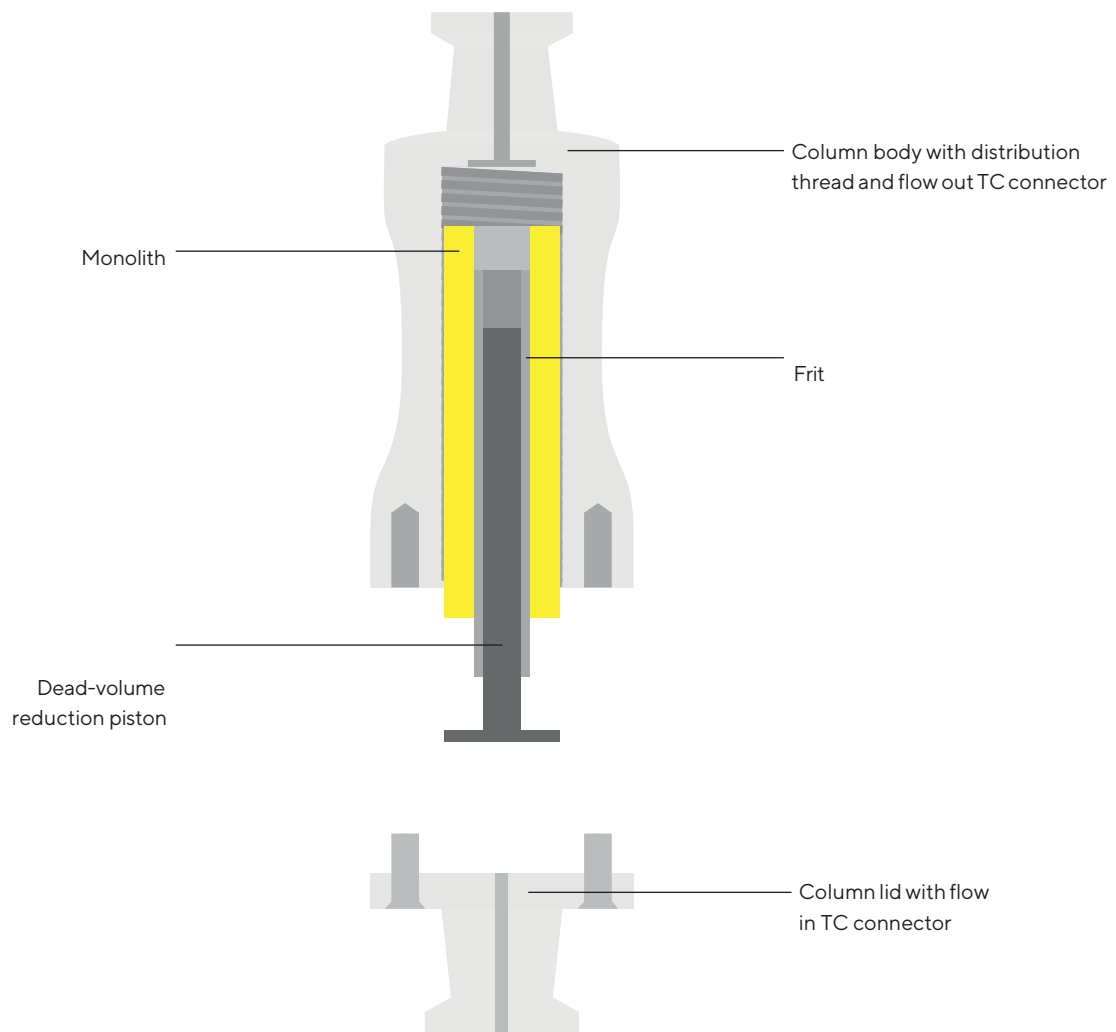
<b>IEX</b>	<b>HIC and RP</b>	<b>Affinity</b>	<b>Mixed-Mode</b>	<b>Activated</b>
CIMmultus® QA	CIMmultus® OH	CIMmultus® Oligo dT	CIMmultus PrimaS®	CIMmultus® CDI
CIMmultus® QA HR	CIMmultus® C4 HLD		CIMmultus® Swiper	CIMmultus® XY
CIMmultus® SO3	CIMmultus® SDVB		CIMmultus® PrimaT	CIMmultus® HDZ
CIMmultus® DEAE			CIMmultus PrimaS® HR	

# Technical Specifications

## CIMmultus Columns

Stationary phase	highly cross-linked, porous and rigid monolith – polymethacrylate
Housing	epoxy thermoset composite, coated pin-hole free with USP Class VI Parylene C
Geometry	Radial
Max. operating flow rate	1 to 16 CV/min (depending on bed volume)
Max. pressure	1 mL: 18 bar; 4, 8, 40 and 80 mL: 20 bar; 400 and 800 mL: 14 bar; 4 and 8 L: 7 bar
Packing	Prepacked
Scalability	Streamlined from 1 mL to 40 L
Reusability	Multi-use or disposable

## CIMmultus Column Design



## CIMmultus for Ion Exchange Chromatography

	CIMmultus® QA HR	CIMmultus® QA
Channel sizes	2 µm	1.3 2 6 µm
Column volume	1 mL – 8 L	1 mL – 8 L
Working range, pH	2 – 13	2 – 13
Cleaning	0.1M NaOH + 2M NaCl	1M NaOH + 2M NaCl
Functionality	Strong anion exchange	Strong anion exchange
Typical application	AAV	Adenovirus, lentivirus, bacteriophages, large proteins, plasma fractionation
Feature	AAV E   F capsid separation	High impurity removal efficiency

	CIMmultus® SO3	CIMmultus® DEAE
Channel sizes	1.3 2 6 µm	1.3 2 6 µm
Column volume	1 mL – 8 L	1 mL – 8 L
Working range, pH	2 – 13	2 – 9
Cleaning	1M NaOH + 2M NaCl	1M NaOH + 2M NaCl
Functionality	Strong cation exchange	Weak anion exchange
Typical application	Viruses, (e.g. AAV) and VLPs	pDNA
Feature	High capacity for purification of viruses and VLPs	High capacity for pDNA

## CIMmultus for Hydrophobic Interaction Chromatography

	CIMmultus® OH	CIMmultus® C4 HLD
Channel sizes	1.3 2 6 µm	2 6 µm
Column volume	1 mL – 8 L	1 mL – 8 L
Working range, pH	2 – 10	2 – 10
Cleaning	1 M NaOH	1 M NaOH
Functionality	Weak hydrophobic	Strong hydrophobic
Typical application	Viruses, (e.g. AAV) and VLPs, LNPs	Nucleic acids (pDNA, mRNA)
Feature	Often used in steric exclusion mode, large solutes retained in the presence of precipitating salts while small molecules and proteins flow through	Highly effective for removing proteins from nucleic acids

## CIMmultus Reversed-Phase Chromatography

	CIMmultus® SDVB
Channel sizes	2 µm
Column volume	1 mL – 8 L
Working range, pH	2 – 13
Cleaning	0.5 M NaOH + 15 % Ethanol
Functionality	Reversed-phase
Typical application	mRNA, LNPs
Feature	Removal of double-stranded RNA at room temperature

## CIMmultus Mixed Mode Chromatography

	CIMmultus PrimaS	CIMmultus® Swiper	CIMmultus® PrimaT
Channel sizes	2 µm	2 µm	2 µm
Column volume	1 mL - 8 L	1 mL - 800 mL	1 mL - 800 mL
Working range, pH	2 - 13	2 - 11	4.5 - 13
Cleaning	0.1 M NaOH + 1M NaCl	0.1 M NaOH + 1 M NaCl	1 M NaOH + 2 M NaCl
Functionality	Hydrogen bonding and anion exchange	Weak anion exchange and hydrogen bonding	Metal affinity, ion exchange, hydrogen bonding
Typical application	mRNA, bacteriophages	mRNA	Viruses (e.g. AAV)
Feature	Supports purification of single-stranded RNA at ambient temperature; highly effective for removing endotoxins	Purification of single-stranded RNA in particular self-amplifying RNA at room temperature and neutral pH	AAV binding at neutral or closer to neutral pH compared to QA-based columns; endotoxin removal

	CIMmultus PrimaS® HR
Channel sizes	2 µm
Column volume	1 mL - 8 L
Working range, pH	2 - 11
Cleaning	0.1 M NaOH + 1M NaCl
Functionality	Hydrogen bonding and anion exchange
Typical application	Viruses (e.g. AAV)
Feature	High reproducible AAV E F separation, allowing AVV binding at neutral or closer to neutral pH, compared to QA- based columns; endotoxin removal

## CIMmultus Activated Chromatography

	CIMmultus® CDI	CIMmultus® XY	CIMmultus® HDZ
Channel sizes	1.3   2   6 µm	1.3   2 µm	2   6 µm
Column volume	1 mL - 8 L	1 mL - 80 ml	1 mL - 40 ml
Working range, pH	4 - 11	1 - 14	4 - 10
Functionality	Carboxy imidazole ligand	Epoxy	Hydrazide
Feature	Coupling of sensitive molecules, such as peptides, proteins, oligonucleotides	Covalent immobilization of peptides, proteins and enzymes	Immobilization glycoproteins through oxidized sugar groups and other carbonyl containing molecules

## CIMmultus for Affinity Purification

CIMmultus® Oligo dT	
Channel sizes	2 µm
Column volume	1 mL – 8 L
Working range, pH	2 – 13
Cleaning	3 M Guanidine-HCl, 5 mM EDTA, pH 7.0. (50 – 500 mM NaOH short term)
Functionality	Hybridization affinity with poly T ligand; C6 or C12 linker
Typical application	mRNA
Feature	Efficient capture of polyadenylated mRNA from various sources

## CIMmultus Process Packs

Process Packs support the development and scale-up of large molecule purification. They come with recommended CIMmultus® columns and detailed process instructions to achieve high-quality purification in a short time.

HiP <sup>2</sup> Plasmid Process Pack®	
Column volume	1 mL – 8 L
Included chemistries	CIMmultus® DEAE, CIMmultus® C4-HLD
Additional components	Detailed process instructions



# Ordering Information

## CIMmultus Columns for IEX

Order Code	Description
BIA-311.5213-2	CIMmultus® QA HR 1 mL Monolithic Column (Quaternary Amine) (2 µm channels)
BIA-414.5213-2	CIMmultus® QA HR 4 mL Monolithic Column (Quaternary Amine) (2 µm channels)
BIA-411.5213-2	CIMmultus® QA HR 8 mL Monolithic Column (Quaternary Amine) (2 µm channels)
BIA-914.5213-2	CIMmultus® QA HR 40 mL cGMP Compliant Monolithic Column (Quaternary Amine) (2 µm channels)
BIA-911.5213-2	CIMmultus® QA HR 80 mL cGMP Compliant Monolithic Column (Quaternary Amine) (2 µm channels)
BIA-924.5213-2	CIMmultus® QA HR 400 mL cGMP Compliant Monolithic Column (Quaternary Amine) (2 µm channels)
BIA-921.5213-2	CIMmultus® QA HR 800 mL cGMP Compliant Monolithic Column (Quaternary Amine) (2 µm channels)
BIA-934.5213-2	CIMmultus® QA HR 4000 mL cGMP Compliant Monolithic Column (Quaternary Amine) (2 µm channels)
BIA-931.5213-2	CIMmultus® QA HR 8000 mL cGMP Compliant Monolithic Column (Quaternary Amine) (2 µm channels)
311.5113-1.3	CIMmultus® QA 1 mL Monolithic Column (Quaternary Amine) (1.3 µm channels)
311.5113-2	CIMmultus® QA 1 mL Monolithic Column (Quaternary Amine) (2 µm channels)
311.5113-6	CIMmultus® QA 1 mL Monolithic Column (Quaternary Amine) (6 µm channels)
414.5113-2	CIMmultus® QA 4 mL Monolithic Column (Quaternary Amine) (2 µm channels)
414.5113-6	CIMmultus® QA 4 mL Monolithic Column (Quaternary Amine) (6 µm channels)
BIA-414.5113-1.3	CIMmultus® QA 4 mL Monolithic Column (Quaternary Amine) (1.3 µm channels)
411.5113-1.3	CIMmultus® QA 8 mL Monolithic Column (Quaternary Amine) (1.3 µm channels)
411.5113-2	CIMmultus® QA 8 mL Monolithic Column (Quaternary Amine) (2 µm channels)
411.5113-6	CIMmultus® QA 8 mL Monolithic Column (Quaternary Amine) (6 µm channels)
614.5113-2	CIMmultus® QA 40 mL Monolithic Column (Quaternary Amine) (2 µm channels)
614.5113-6	CIMmultus® QA 40 mL Monolithic Column (Quaternary Amine) (6 µm channels)
BIA-614.5113-1.3	CIMmultus® QA 40 mL Monolithic Column (Quaternary Amine) (1.3 µm channels)
611.5113-1.3	CIMmultus® QA 80 mL Monolithic Column (Quaternary Amine) (1.3 µm channels)
611.5113-2	CIMmultus® QA 80 mL Monolithic Column (Quaternary Amine) (2 µm channels)
611.5113-6	CIMmultus® QA 80 mL Monolithic Column (Quaternary Amine) (6 µm channels)
814.5113-2	CIMmultus® QA 400 mL Monolithic Column (Quaternary Amine) (2 µm channels)
BIA-814.5113-1.3	CIMmultus® QA 400 mL Monolithic Column (Quaternary Amine) (1.3 µm channels)
811.5113-1.3	CIMmultus® QA 800 mL Monolithic Column (Quaternary Amine) (1.3 µm channels)
811.5113-2	CIMmultus® QA 800 mL Monolithic Column (Quaternary Amine) (2 µm channels)
811.5113-6	CIMmultus® QA 800 mL Monolithic Column (Quaternary Amine) (6 µm channels)
1014.5113-2	CIMmultus® QA 4000 mL Monolithic Column (Quaternary Amine) (2 µm channels)
BIA-1014.5113-6	CIMmultus® QA 4000 mL Monolithic Column (Quaternary Amine) (6 µm channels)
1011.5113-1.3	CIMmultus® QA 8000 mL Monolithic Column (Quaternary Amine) (1.3 µm channels)
1011.5113-2	CIMmultus® QA 8000 mL Monolithic Column (Quaternary Amine) (2 µm channels)
1011.5113-6	CIMmultus® QA 8000 mL Monolithic Column (Quaternary Amine) (6 µm channels)

904.5113-2	CIMmultus® QA 4 mL cGMP Compliant Monolithic Column (Quaternary Amine) (2 µm channels)
901.5113-2	CIMmultus® QA 8 mL cGMP Compliant Monolithic Column (Quaternary Amine) (2 µm channels)
BIA-901.5113-1.3	CIMmultus® QA 8 mL cGMP Compliant Monolithic Column (Quaternary Amine) (1.3 µm channels)
914.5113-2	CIMmultus® QA 40 mL cGMP Compliant Monolithic Column (Quaternary Amine) (2 µm channels)
BIA-914.5113-1.3	CIMmultus® QA 40 mL cGMP Compliant Monolithic Column (Quaternary Amine) (1.3 µm channels)
911.5113-1.3	CIMmultus® QA 80 mL cGMP Compliant Monolithic Column (Quaternary Amine) (1.3 µm channels)
911.5113-2	CIMmultus® QA 80 mL cGMP Compliant Monolithic Column (Quaternary Amine) (2 µm channels)
911.5113-6	CIMmultus® QA 80 mL cGMP Compliant Monolithic Column (Quaternary Amine) (6 µm channels)
924.5113-2	CIMmultus® QA 400 mL cGMP Compliant Monolithic Column (Quaternary Amine) (2 µm channels)
BIA-924.5113-6	CIMmultus® QA 400 mL cGMP Compliant Monolithic Column (Quaternary Amine) (6 µm channels)
921.5113-1.3	CIMmultus® QA 800 mL cGMP Compliant Monolithic Column (Quaternary Amine) (1.3 µm channels)
921.5113-2	CIMmultus® QA 800 mL cGMP Compliant Monolithic Column (Quaternary Amine) (2 µm channels)
921.5113-6	CIMmultus® QA 800 mL cGMP Compliant Monolithic Column (Quaternary Amine) (6 µm channels)
934.5113-2	CIMmultus® QA 4000 mL cGMP Compliant Monolithic Column (Quaternary Amine) (2 µm channels)
BIA-934.5113-6	CIMmultus® QA 4000 mL cGMP Compliant Monolithic Column (Quaternary Amine) (6 µm channels)
931.5113-1.3	CIMmultus® QA 8000 mL cGMP Compliant Monolithic Column (Quaternary Amine) (1.3 µm channels)
931.5113-2	CIMmultus® QA 8000 mL cGMP Compliant Monolithic Column (Quaternary Amine) (2 µm channels)
931.5113-6	CIMmultus® QA 8000 mL cGMP Compliant Monolithic Column (Quaternary Amine) (6 µm channels)
311.5114-1.3	CIMmultus® DEAE 1 mL Monolithic Column (Diethylamino) (1.3 µm channels)
311.5114-2	CIMmultus® DEAE 1 mL Monolithic Column (Diethylamino) (2 µm channels)
311.5114-6	CIMmultus® DEAE 1 mL Monolithic Column (Diethylamino) (6 µm channels)
414.5114-2	CIMmultus® DEAE 4 mL Monolithic Column (Diethylamino) (2 µm channels)
BIA-414.5114-1.3	CIMmultus® DEAE 4 mL Monolithic Column (Diethylamino) (1.3 µm channels)
414.5114-6	CIMmultus® DEAE 4 mL Monolithic Column (Diethylamino) (6 µm channels)
411.5114-1.3	CIMmultus® DEAE 8 mL Monolithic Column (Diethylamino) (1.3 µm channels)
411.5114-2	CIMmultus® DEAE 8 mL Monolithic Column (Diethylamino) (2 µm channels)
411.5114-6	CIMmultus® DEAE 8 mL Monolithic Column (Diethylamino) (6 µm channels)
614.5114-2	CIMmultus® DEAE 40 mL Monolithic Column (Diethylamino) (2 µm channels)
BIA-614.5114-6	CIMmultus® DEAE 40 mL Monolithic Column (Diethylamino) (6 µm channels)
611.5114-1.3	CIMmultus® DEAE 80 mL Monolithic Column (Diethylamino) (1.3 µm channels)
611.5114-2	CIMmultus® DEAE 80 mL Monolithic Column (Diethylamino) (2 µm channels)
611.5114-6	CIMmultus® DEAE 80 mL Monolithic Column (Diethylamino) (6 µm channels)
814.5114-2	CIMmultus® DEAE 400 mL Monolithic Column (Diethylamino) (2 µm channels)
BIA-814.5114-6	CIMmultus® DEAE 400 mL Monolithic Column (Diethylamino) (6 µm channels)
811.5114-2	CIMmultus® DEAE 800 mL Monolithic Column (Diethylamino) (2 µm channels)
811.5114-6	CIMmultus® DEAE 800 mL Monolithic Column (Diethylamino) (6 µm channels)
1014.5114-2	CIMmultus® DEAE 4000 mL Monolithic Column (Diethylamino) (2 µm channels)
1014.5114-6	CIMmultus® DEAE 4000 mL Monolithic Column (Diethylamino) (6 µm channels)
1011.5114-2	CIMmultus® DEAE 8000 mL Monolithic Column (Diethylamino) (2 µm channels)
BIA-904.5114-2	CIMmultus® DEAE 4 mL cGMP Compliant Monolithic Column (Diethylamino) (2 µm channels)
BIA-904.5114-6	CIMmultus® DEAE 4 mL cGMP Compliant Monolithic Column (Diethylamino) (6 µm channels)
901.5114-2	CIMmultus® DEAE 8 mL cGMP Compliant Monolithic Column (Diethylamino) (2 µm channels)

BIA-901.5114-6	CIMmultus® DEAE 8 mL cGMP Compliant Monolithic Column (Diethylamino) (6 µm channels)
914.5114-2	CIMmultus® DEAE 40 mL cGMP Compliant Monolithic Column (Diethylamino) (2 µm channels)
BIA-914.5114-6	CIMmultus® DEAE 40 mL cGMP Compliant Monolithic Column (Diethylamino) (6 µm channels)
911.5114-13	CIMmultus® DEAE 80 mL cGMP Compliant Monolithic Column (Diethylamino) (1.3 µm channels)
911.5114-2	CIMmultus® DEAE 80 mL cGMP Compliant Monolithic Column (Diethylamino) (2 µm channels)
911.5114-6	CIMmultus® DEAE 80 mL cGMP Compliant Monolithic Column (Diethylamino) (6 µm channels)
924.5114-2	CIMmultus® DEAE 400 mL cGMP Compliant Monolithic Column (Diethylamino) (2 µm channels)
BIA-924.5114-6	CIMmultus® DEAE 400 mL cGMP Compliant Monolithic Column (Diethylamino) (6 µm channels)
921.5114-2	CIMmultus® DEAE 800 mL cGMP Compliant Monolithic Column (Diethylamino) (2 µm channels)
921.5114-6	CIMmultus® DEAE 800 mL cGMP Compliant Monolithic Column (Diethylamino) (6 µm channels)
934.5114-2	CIMmultus® DEAE 4000 mL cGMP Compliant Monolithic Column (Diethylamino) (2 µm channels)
934.5114-6	CIMmultus® DEAE 4000 mL cGMP Monolithic Column (Diethylamino) (6 µm channels)
931.5114-2	CIMmultus® DEAE 8000 mL cGMP Compliant Monolithic Column (Diethylamino) (2 µm channels)
931.5114-6	CIMmultus® DEAE 8000 mL cGMP Compliant Monolithic Column (Diethylamino) (6 µm channels)
311.6157-2	CIMmultus® SO3 1 mL Monolithic Column (Sulfonate) (2 µm channels)
311.6157-6	CIMmultus® SO3 1 mL Monolithic Column (Sulfonate) (6 µm channels)
414.6157-2	CIMmultus® SO3 4 mL Monolithic Column (Sulfonate) (2 µm channels)
414.6157-6	CIMmultus® SO3 4 mL Monolithic Column (Sulfonate) (6 µm channels)
411.6157-2	CIMmultus® SO3 8 mL Monolithic Column (Sulfonate) (2 µm channels)
411.6157-6	CIMmultus® SO3 8 mL Monolithic Column (Sulfonate) (6 µm channels)
BIA-614.6157-6	CIMmultus® SO3 40 mL Monolithic Column (Sulfonate) (6 µm channels)
614.6157-2	CIMmultus® SO3 40 mL Monolithic Column (Sulfonate) (2 µm channels)
611.6157-2	CIMmultus® SO3 80 mL Monolithic Column (Sulfonate) (2 µm channels)
611.6157-6	CIMmultus® SO3 80 mL Monolithic Column (Sulfonate) (6 µm channels)
BIA-814.6157-6	CIMmultus® SO3 400 mL Monolithic Column (Sulfonate) (6 µm channels)
814.6157-2	CIMmultus® SO3 400 mL Monolithic Column (Sulfonate) (2 µm channels)
811.6157-2	CIMmultus® SO3 800 mL Monolithic Column (Sulfonate) (2 µm channels)
811.6157-6	CIMmultus® SO3 800 mL Monolithic Column (Sulfonate) (6 µm channels)
1014.6157-2	CIMmultus® SO3 4000 mL Monolithic Column (Sulfonate) (2 µm channels)
BIA-1014.6157-6	CIMmultus® SO3 4000 mL Monolithic Column (Sulfonate) (6 µm channels)
1011.6157-2	CIMmultus® SO3 8000 mL Monolithic Column (Sulfonate) (2 µm channels)
BIA-1011.6157-6	CIMmultus® SO3 8000 mL Monolithic Column (Sulfonate) (6 µm channels)
904.6157-2	CIMmultus® SO3 4 mL cGMP Compliant Monolithic Column (Sulfonate) (2 µm channels)
901.6157-2	CIMmultus® SO3 8 mL cGMP Compliant Monolithic Column (Sulfonate) (2 µm channels)
914.6157-2	CIMmultus® SO3 40 mL cGMP Compliant Monolithic Column (Sulfonate) (2 µm channels)
911.6157-2	CIMmultus® SO3 80 mL cGMP Compliant Monolithic Column (Sulfonate) (2 µm channels)
911.6157-6	CIMmultus® SO3 80 mL cGMP Compliant Monolithic Column (Sulfonate) (6 µm channels)
924.6157-2	CIMmultus® SO3 400 mL cGMP Compliant Monolithic Column (Sulfonate) (2 µm channels)
924.6157-6	CIMmultus® SO3 400 mL cGMP Compliant Monolithic Column (Sulfonate) (6 µm channels)
921.6157-2	CIMmultus® SO3 800 mL cGMP Compliant Monolithic Column (Sulfonate) (2 µm channels)
BIA-921.6157-6	CIMmultus® SO3 800 mL cGMP Compliant Monolithic Column (Sulfonate) (6 µm channels)

934.6157-2	CIMmultus® SO3 4000 mL cGMP Compliant Monolithic Column (Sulfonate) (2 µm channels)
BIA-934.6157-6	CIMmultus® SO3 4000 mL cGMP Compliant Monolithic Column (Sulfonate) (6 µm channels)
931.6157-2	CIMmultus® SO3 8000 mL cGMP Compliant Monolithic Column (Sulfonate) (2 µm channels)
BIA-931.6157-6	CIMmultus® SO3 8000 mL cGMP Compliant Monolithic Column (Sulfonate) (6 µm channels)

## CIMmultus Columns for HIC

Order Code	Description
311.8136-2	CIMmultus® C4 HLD 1 mL Monolithic Column (HLD Butyl) (2 µm channels)
311.8136-6	CIMmultus® C4 HLD 1 mL Monolithic Column (HLD Butyl) (6 µm channels)
414.8136-6	CIMmultus® C4 HLD 4 mL Monolithic Column (HLD Butyl) (6 µm channels)
414.8136-2	CIMmultus® C4 HLD 4 mL Monolithic Column (HLD Butyl) (2 µm channels)
411.8136-2	CIMmultus® C4 HLD 8 mL Monolithic Column (HLD Butyl) (2 µm channels)
411.8136-6	CIMmultus® C4 HLD 8 mL Monolithic Column (HLD Butyl) (6 µm channels)
BIA-614.8136-6	CIMmultus® C4 HLD 40 mL Monolithic Column (HLD Butyl) (6 µm channels)
614.8136-2	CIMmultus® C4 HLD 40 mL Monolithic Column (HLD Butyl) (2 µm channels)
611.8136-6	CIMmultus® C4 HLD-80 Monolithic Column (HLD Butyl) (6 µm channels)
611.8136-2	CIMmultus® C4 HLD 80 mL Monolithic Column (HLD Butyl) (2 µm channels)
814.8136-2	CIMmultus® C4 HLD 400 mL Monolithic Column (HLD Butyl) (2 µm channels)
811.8136-6	CIMmultus® C4 HLD 800 mL Monolithic Column (HLD Butyl) (6 µm channels)
811.8136-2	CIMmultus® C4 HLD 800 mL Monolithic Column (HLD Butyl) (2 µm channels)
BIA-1014.8136-6	CIMmultus® C4 HLD 4000 mL Monolithic Column (HLD Butyl) (6 µm channels)
1014.8136-2	CIMmultus® C4 HLD 4000 mL Monolithic Column (HLD Butyl) (2 µm channels)
1011.8136-6	CIMmultus® C4 HLD 8000 mL Monolithic Column (HLD Butyl) (6 µm channels)
1011.8136-2	CIMmultus® C4 HLD 8000 mL Monolithic Column (HLD Butyl) (2 µm channels)
BIA-904.8136-2	CIMmultus® C4 HLD 4 mL cGMP Compliant Monolithic Column (HLD Butyl) (2 µm channels)
901.8136-2	CIMmultus® C4 HLD 8 mL cGMP Compliant Monolithic Column (HLD Butyl) (2 µm channels)
914.8136-2	CIMmultus® C4 HLD 40 mL cGMP Compliant Monolithic Column (HLD Butyl) (2 µm channels)
911.8136-2	CIMmultus® C4 HLD 80 mL cGMP Compliant Monolithic Column (HLD Butyl) (2 µm channels)
BIA-911.8136-6	CIMmultus® C4 HLD 80 mL cGMP Compliant Monolithic Column (HLD Butyl) (6 µm channels)
924.8136-2	CIMmultus® C4 HLD 400 mL cGMP Compliant Monolithic Column (HLD Butyl) (2 µm channels)
BIA-924.8136-6	CIMmultus® C4 HLD 400 mL cGMP Compliant Monolithic Column (HLD Butyl) (6 µm channels)
921.8136-2	CIMmultus® C4 HLD 800 mL cGMP Compliant Monolithic Column (HLD Butyl) (2 µm channels)
BIA-921.8136-6	CIMmultus® C4 HLD 800 mL cGMP Compliant Monolithic Column (HLD Butyl) (6 µm channels)
934.8136-2	CIMmultus® C4 HLD 4000 mL cGMP Compliant Monolithic Column (HLD Butyl) (2 µm channels)
BIA-934.8136-6	CIMmultus® C4 HLD 4000 mL cGMP Compliant Monolithic Column (HLD Butyl) (6 µm channels)
931.8136-2	CIMmultus® C4 HLD 8000 mL cGMP Compliant Monolithic Column (HLD Butyl) (2 µm channels)
BIA-931.8136-6	CIMmultus® C4 HLD 8000 mL cGMP Compliant Monolithic Column (HLD Butyl) (6 µm channels)

311.8140-1.3	CIMmultus® OH 1 mL Monolithic Column (Hydroxyl) (1.3 µm channels)
311.8140-2	CIMmultus® OH 1 mL Monolithic Column (Hydroxyl) (2 µm channels)
311.8140-6	CIMmultus® OH 1 mL Monolithic Column (Hydroxyl) (6 µm channels)
414.8140-2	CIMmultus® OH 4 mL Monolithic Column (Hydroxyl) (2 µm channels)
BIA-414.8140-6	CIMmultus® OH 4 mL Monolithic Column (Hydroxyl) (6 µm channels)
411.8140-1.3	CIMmultus® OH 8 mL Monolithic Column (Hydroxyl) (1.3 µm channels)
411.8140-2	CIMmultus® OH 8 mL Monolithic Column (Hydroxyl) (2 µm channels)
411.8140-6	CIMmultus® OH 8 mL Monolithic Column (Hydroxyl) (6 µm channels)
614.8140-2	CIMmultus® OH 40 mL Monolithic Column (Hydroxyl) (2 µm channels)
614.8140-6	CIMmultus® OH 40 mL Monolithic Column (Hydroxyl) (6 µm channels)
611.8140-1.3	CIMmultus® OH 80 mL Monolithic Column (Hydroxyl) (1.3 µm channels)
611.8140-2	CIMmultus® OH 80 mL Monolithic Column (Hydroxyl) (2 µm channels)
611.8140-6	CIMmultus® OH 80 mL Monolithic Column (Hydroxyl) (6 µm channels)
814.8140-2	CIMmultus® OH 400 mL Monolithic Column (Hydroxyl) (2 µm channels)
814.8140-6	CIMmultus® OH 400 mL Monolithic Column (Hydroxyl) (6 µm channels)
811.8140-2	CIMmultus® OH 800 mL Monolithic Column (Hydroxyl) (2 µm channels)
BIA-811.8140-6	CIMmultus® OH 800 mL Monolithic Column (Hydroxyl) (6 µm channels)
BIA-1014.8140-6	CIMmultus® OH 4000 mL Monolithic Column (Hydroxyl) (6 µm channels)
1011.8140-2	CIMmultus® OH 8000 mL Monolithic Column (Hydroxyl) (2 µm channels)
914.8140-2	CIMmultus® OH 40 mL cGMP Compliant Monolithic Column (Hydroxyl) (2 µm channels)
BIA-914.8140-6	CIMmultus® OH 40 mL cGMP Compliant Monolithic Column (Hydroxyl) (6 µm channels)
911.8140-2	CIMmultus® OH 80 mL cGMP Compliant Monolithic Column (Hydroxyl) (2 µm channels)
911.8140-6	CIMmultus® OH 80 mL cGMP Compliant Monolithic Column (Hydroxyl) (6 µm channels)
924.8140-2	CIMmultus® OH 400 mL cGMP Compliant Monolithic Column (Hydroxyl) (2 µm channels)
924.8140-6	CIMmultus® OH 400 mL cGMP Compliant Monolithic Column (Hydroxyl) (6 µm channels)
921.8140-2	CIMmultus® OH 800 mL cGMP Compliant Monolithic Column (Hydroxyl) (2 µm channels)
921.8140-6	CIMmultus® OH 800 mL cGMP Compliant Monolithic Column (Hydroxyl) (6 µm channels)
934.8140-2	CIMmultus® OH 4000 mL cGMP Compliant Monolithic Column (Hydroxyl) (2 µm channels)
BIA-934.8140-6	CIMmultus® OH 4000 mL cGMP Compliant Monolithic Column (Hydroxyl) (6 µm channels)
931.8140-2	CIMmultus® OH 8000 mL cGMP Compliant Monolithic Column (Hydroxyl) (2 µm channels)
BIA-931.8140-6	CIMmultus® OH 8000 mL cGMP Compliant Monolithic Column (Hydroxyl) (6 µm channels)

## CIMmultus Columns for Affinity Chromatography

Order Code	Description
311.1219-2	CIMmultus® Oligo dT18 1 mL Monolithic Column (C12 Linker) (2 µm channels)
414.1219-2	CIMmultus® Oligo dT18 4 mL Monolithic Column (C12 Linker) (2 µm channels)
411.1219-2	CIMmultus® Oligo dT18 8 mL Monolithic Column (C12 Linker) (2 µm channels)
614.1219-2	CIMmultus® Oligo dT18 40 mL Monolithic Column (C12 Linker) (2 µm channels)

611.1219-2	CIMmultus® Oligo dT18 80 mL Monolithic Column (C12 Linker) (2 µm channels)
814.1219-2	CIMmultus® Oligo dT18 400 mL Monolithic Column (C12 Linker) (2 µm channels)
811.1219-2	CIMmultus® Oligo dT18 800 mL Monolithic Column (C12 Linker) (2 µm channels)
1014.1219-2	CIMmultus® Oligo dT18 4000 mL Monolithic Column (C12 Linker) (2 µm channels)
1011.1219-2	CIMmultus® Oligo dT18 8000 mL Monolithic Column (C12 Linker) (2 µm channels)
BIA-904.1219-2	CIMmultus® Oligo dT18 4 mL cGMP Compliant Monolithic Column (C12 Linker) (2 µm channels)
901.1219-2	CIMmultus® Oligo dT18 8 mL cGMP Compliant Monolithic Column (C12 Linker) (2 µm channels)
914.1219-2	CIMmultus® Oligo dT18 40 mL cGMP Compliant Monolithic Column (C12 Linker) (2 µm channels)
911.1219-2	CIMmultus® Oligo dT18 80 mL cGMP Compliant Monolithic Column (C12 Linker) (2 µm channels)
924.1219-2	CIMmultus® Oligo dT18 400 mL cGMP Compliant Monolithic Column (C12 Linker) (2 µm channels)
921.1219-2	CIMmultus® Oligo dT18 800 mL cGMP Compliant Monolithic Column (C12 Linker) (2 µm channels)
934.1219-2	CIMmultus® Oligo dT18 4000 mL cGMP Compliant Monolithic Column (C12 Linker) (2 µm channels)
931.1219-2	CIMmultus® Oligo dT18 8000 mL cGMP Compliant Monolithic Column (C12 Linker) (2 µm channels)
311.1218-2	CIMmultus® Oligo dT18 1 mL Monolithic Column (C6 Linker) (2 µm channels)
414.1218-2	CIMmultus® Oligo dT18 4 mL Monolithic Column (C6 Linker) (2 µm channels)
411.1218-2	CIMmultus® Oligo dT18 8 mL Monolithic Column (C6 Linker) (2 µm channels)
614.1218-2	CIMmultus® Oligo dT18 40 mL Monolithic Column (C6 Linker) (2 µm channels)
611.1218-2	CIMmultus® Oligo dT18 80 mL Monolithic Column (C6 Linker) (2 µm channels)
814.1218-2	CIMmultus® Oligo dT18 400 mL Monolithic Column (C6 Linker) (2 µm channels)
811.1218-2	CIMmultus® Oligo dT18 800 mL Monolithic Column (C6 Linker) (2 µm channels)
1014.1218-2	CIMmultus® Oligo dT18 4000 mL Monolithic Column (C6 Linker) (2 µm channels)
1011.1218-2	CIMmultus® Oligo dT18 8000 mL Monolithic Column (C6 Linker) (2 µm channels)
BIA-904.1218-2	CIMmultus® Oligo dT18 4 mL cGMP Compliant Monolithic Column (C6 Linker) (2 µm channels)
901.1218-2	CIMmultus® Oligo dT18 8 mL cGMP Compliant Monolithic Column (C6 Linker) (2 µm channels)
914.1218-2	CIMmultus® Oligo dT18 40 mL cGMP Compliant Monolithic Column (C6 Linker) (2 µm channels)
911.1218-2	CIMmultus® Oligo dT18 80 mL cGMP Compliant Monolithic Column (C6 Linker) (2 µm channels)
924.1218-2	CIMmultus® Oligo dT18 400 mL cGMP Compliant Monolithic Column (C6 Linker) (2 µm channels)

## CIMmultus Columns for Multimodal Chromatography

Order Code	Description
311.5118-2	CIMmultus PrimaS® 1 mL Monolithic Column (2 µm channels)
414.5118-2	CIMmultus PrimaS® 4 mL Monolithic Column (2 µm channels)
411.5118-2	CIMmultus PrimaS® 8 mL Monolithic Column (2 µm channels)
614.5118-2	CIMmultus PrimaS® 40 mL Monolithic Column (2 µm channels)
611.5118-2	CIMmultus PrimaS® 80 mL Monolithic Column (2 µm channels)
814.5118-2	CIMmultus PrimaS® 400 mL Monolithic Column (2 µm channels)
811.5118-2	CIMmultus PrimaS® 800 mL Monolithic Column (2 µm channels)
BIA-1014.5118-2	CIMmultus PrimaS® 4000 mL Monolithic Column (2 µm channels)

901.5118-2	CIMmultus PrimaS® 8 mL cGMP Compliant Monolithic Column (2 µm channels)
914.5118-2	CIMmultus PrimaS® 40 mL cGMP Compliant Monolithic Column (2 µm channels)
911.5118-2	CIMmultus PrimaS® 80 mL cGMP Compliant Monolithic Column (2 µm channels)
924.5118-2	CIMmultus PrimaS® 400 mL cGMP Compliant Monolithic Column (2 µm channels)
921.5118-2	CIMmultus PrimaS® 800 mL cGMP Compliant Monolithic Column (2 µm channels)
934.5118-2	CIMmultus PrimaS® 4000 mL cGMP Compliant Monolithic Column (2 µm channels)
931.5118-2	CIMmultus PrimaS® 8000 mL cGMP Compliant Monolithic Column (2 µm channels)
BIA-311.5119-2	CIMmultus PrimaS® HR 1 mL Monolithic Column (2 µm channels)
BIA-411.5119-2	CIMmultus PrimaS® HR 8 mL Monolithic Column (2 µm channels)
BIA-414.5119-2	CIMmultus PrimaS® HR 4 mL Monolithic Column (2 µm channels)
BIA-914.5119-2	CIMmultus PrimaS® HR 40 mL cGMP Compliant Monolithic Column (2 µm channels)
BIA-911.5119-2	CIMmultus PrimaS® HR 80 mL cGMP Compliant Monolithic Column (2 µm channels)
BIA-924.5119-2	CIMmultus PrimaS® HR 400 mL cGMP Compliant Monolithic Column (2 µm channels)
BIA-921.5119-2	CIMmultus PrimaS® HR 800 mL cGMP Compliant Monolithic Column (2 µm channels)
BIA-934.5119-2	CIMmultus PrimaS® HR 4000 mL cGMP Compliant Monolithic Column (2 µm channels)
BIA-931.5119-2	CIMmultus PrimaS® HR 8000 mL cGMP Compliant Monolithic Column (2 µm channels)
BIA-311.5122-2	CIMmultus® Swiper 1 mL Monolithic Column (2 µm channels)
BIA-414.5122-2	CIMmultus® Swiper 4 mL Monolithic Column (2 µm channels)
BIA-411.5122-2	CIMmultus® Swiper 8 mL Monolithic Column (2 µm channels)
BIA-614.5122-2	CIMmultus® Swiper 40 mL Monolithic Column (2 µm channels)
BIA-611.5122-2	CIMmultus® Swiper 80 mL Monolithic Column (2 µm channels)
BIA-814.5122-2	CIMmultus® Swiper 400 mL Monolithic Column (2 µm channels)
BIA-811.5122-2	CIMmultus® Swiper 800 mL Monolithic Column (2 µm channels)
BIA-904.5122-2	CIMmultus® Swiper 4 mL cGMP Compliant Monolithic Column (2 µm channels)
BIA-901.5122-2	CIMmultus® Swiper 8 mL cGMP Compliant Monolithic Column (2 µm channels)
BIA-914.5122-2	CIMmultus® Swiper 40 mL cGMP Compliant Monolithic Column (2 µm channels)
BIA-911.5122-2	CIMmultus® Swiper 80 mL cGMP Compliant Monolithic Column (2 µm channels)
BIA-924.5122-2	CIMmultus® Swiper 400 mL cGMP Compliant Monolithic Column (2 µm channels)
BIA-921.5122-2	CIMmultus® Swiper 800 mL cGMP Compliant Monolithic Column (2 µm channels)
BIA-311.5121-2	CIMmultus® PrimaT 1 mL Monolithic Column (2 µm channels)
BIA-414.5121-2	CIMmultus® PrimaT 4 mL Monolithic Column (2 µm channels)
BIA-411.5121-2	CIMmultus® PrimaT 8 mL Monolithic Column (2 µm channels)
BIA-614.5121-2	CIMmultus® PrimaT 40 mL Monolithic Column (2 µm channels)
BIA-611.5121-2	CIMmultus® PrimaT 80 mL Monolithic Column (2 µm channels)
BIA-814.5121-2	CIMmultus® PrimaT 400 mL Monolithic Column (2 µm channels)
BIA-811.5121-2	CIMmultus® PrimaT 800 mL Monolithic Column (2 µm channels)

BIA-904.5121-2	CIMmultus® PrimaT 4 mL cGMP Compliant Monolithic Column (2 µm channels)
BIA-901.5121-2	CIMmultus® PrimaT 8 mL cGMP Compliant Monolithic Column (2 µm channels)
BIA-914.5121-2	CIMmultus® PrimaT 40 mL cGMP Compliant Monolithic Column (2 µm channels)
BIA-911.5121-2	CIMmultus® PrimaT 80 mL cGMP Compliant Monolithic Column (2 µm channels)
BIA-924.5121-2	CIMmultus® PrimaT 400 mL cGMP Compliant Monolithic Column (2 µm channels)
BIA-921.5121-2	CIMmultus® PrimaT 800 mL cGMP Compliant Monolithic Column (2 µm channels)

## CIMmultus Activated Chromatography

Order Code	Description
311.8000-2	CIMmultus® CDI 1 mL Monolithic Column (Carbonyldiimidazole) (2 µm channels)
311.8000-1.3	CIMmultus® CDI 1 mL Monolithic Column (Carbonyldiimidazole) (1.3 µm channels)
311.8000-6	CIMmultus® CDI 1 mL Monolithic Column (Carbonyldiimidazole) (6 µm channels)
411.8000-2	CIMmultus® CDI 8 mL Monolithic Column (Carbonyldiimidazole) (2 µm channels)
411.8000-1.3	CIMmultus® CDI 8 mL Monolithic Column (Carbonyldiimidazole) (1.3 µm channels)
BIA-411.8000-6	CIMmultus® CDI 8 mL Monolithic Column (Carbonyldiimidazole) (6 µm channels)
BIA-614.8000-2	CIMmultus® CDI 40 mL Monolithic Column (Carbonyldiimidazole) (2 µm channels)
BIA-614.8000-6	CIMmultus® CDI 40 mL Monolithic Column (Carbonyldiimidazole) (6 µm channels)
611.8000-2	CIMmultus® CDI 80 mL Monolithic Column (Carbonyldiimidazole) (2 µm channels)
611.8000-1.3	CIMmultus® CDI 80 mL Monolithic Column (Carbonyldiimidazole) (1.3 µm channels)
BIA-814.8000-2	CIMmultus® CDI 400 mL Monolithic Column (Carbonyldiimidazole) (2 µm channels)
811.8000-2	CIMmultus® CDI 800 mL Monolithic Column (Carbonyldiimidazole) (2 µm channels)
BIA-811.8000-6	CIMmultus® CDI 800 mL Monolithic Column (Carbonyldiimidazole) (6 µm channels)
BIA-1014.8000-2	CIMmultus® CDI 4000 mL Monolithic Column (Carbonyldiimidazole) (2 µm channels)
1011.8000-2	CIMmultus® CDI 8000 mL Monolithic Column (Carbonyldiimidazole) (2 µm channels)
BIA-924.8000-2	CIMmultus® CDI 400 mL cGMP Compliant Monolithic Column (Carbonyldiimidazole) (2 µm channels)
921.8000-2	CIMmultus® CDI 800 mL cGMP Compliant Monolithic Column (Carbonyldiimidazole) (2 µm channels)
931.8000-2	CIMmultus® CDI 8000 mL cGMP Compliant Monolithic Column (Carbonyldiimidazole) (2 µm channels)
311.7175-1.3	CIMmultus® XY 1 mL Monolithic Column (Epoxy) (1.3 µm channels)
311.7175-2	CIMmultus® XY 1 mL Monolithic Column (Epoxy) (2 µm channels)
311.7175-6	CIMmultus® XY 1 mL Monolithic Column (Epoxy) (6 µm channels)
411.7175-1.3	CIMmultus® XY 8 mL Monolithic Column (Epoxy) (1.3 µm channels)
411.7175-2	CIMmultus® XY 8 mL Monolithic Column (Epoxy) (2 µm channels)
611.7175-1.3	CIMmultus® XY 80 mL Monolithic Column (Epoxy) (1.3 µm channels)
611.7175-2	CIMmultus® XY 80 mL Monolithic Column (Epoxy) (2 µm channels)
311.8002-2	CIMmultus® HDZ 1 mL Monolithic Column (Hydrazide) (2 µm channels)

## CIMmultus Reversed Phase Chromatography

Order code	Description
311.9001-2	CIMmultus® SDVB 1 mL Monolithic Column (2 µm channels)
414.9001-2	CIMmultus® SDVB 4 mL Monolithic Column (2 µm channels)
411.9001-2	CIMmultus® SDVB 8 mL Monolithic Column (2 µm channels)
614.9001-2	CIMmultus® SDVB 40 mL Monolithic Column (2 µm channels)
611.9001-1.3	CIMmultus® SDVB 80 mL Monolithic Column (1.3 µm channels)
611.9001-2	CIMmultus® SDVB 80 mL Monolithic Column (2 µm channels)
814.9001-2	CIMmultus® SDVB 400 mL Monolithic Column (2 µm channels)
811.9001-1.3	CIMmultus® SDVB 800 mL Monolithic Column (1.3 µm channels)
811.9001-2	CIMmultus® SDVB 800 mL Monolithic Column (2 µm channels)
1014.9001-2	CIMmultus® SDVB 4000 mL Monolithic Column (2 µm channels)
1011.9001-2	CIMmultus® SDVB 8000 mL Monolithic Column (2 µm channels)
901.9001-2	CIMmultus® SDVB 8 mL cGMP Compliant Monolithic Column (2 µm channels)
914.9001-2	CIMmultus® SDVB 40 mL cGMP Compliant Monolithic Column (2 µm channels)
911.9001-2	CIMmultus® SDVB 80 mL cGMP Compliant Monolithic Column (2 µm channels)
924.9001-2	CIMmultus® SDVB 400 mL cGMP Compliant Monolithic Column (2 µm channels)
921.9001-2	CIMmultus® SDVB 800 mL cGMP Compliant Monolithic Column (2 µm channels)
934.9001-2	CIMmultus® SDVB 4000 mL cGMP Compliant Monolithic Column (2 µm channels)
931.9001-2	CIMmultus® SDVB 8000 mL cGMP Compliant Monolithic Column (2 µm channels)

## CIMmultus Process Packs

Order Code	Description
100.0011-2	CIMmultus® HiP2 Plasmid Process Pack 1-1 mL (1x DEAE 311.5114-2, 1x C4 HLD 311.8136-2)
100.0016-2	CIMmultus® HiP2 Plasmid Process Pack 4-4 mL (1x DEAE 414.5114-2, 1x C4 HLD 414.8136-2)
100.0012-2	CIMmultus® HiP2 Plasmid Process Pack 8-8 mL (1x DEAE 411.5114-2, 1x C4 HLD 411.8136-2)
100.0017-2	CIMmultus® HiP2 Plasmid Process Pack 40-40 mL (1x DEAE 614.5114-2, 1x C4 HLD 614.8136-2)
100.0013-2	CIMmultus® HiP2 Plasmid Process Pack 80-80 mL (1x DEAE 611.5114-2, 1x C4 HLD 611.8136-2)
100.0018-2	CIMmultus® HiP2 Plasmid Process Pack 400-400 mL (1x DEAE 814.5114-2, 1x C4 HLD 814.8136-2)
100.0014-2	CIMmultus® HiP2 Plasmid Process Pack 800-800 mL (1x DEAE 811.5114-2, 1x C4 HLD 811.8136-2)
100.0019-2	CIMmultus® HiP2 Plasmid Process Pack 4000-4000 mL (1x DEAE 1014.5114-2, 1x C4 HLD 1014.8136-2)
100.0015-2	CIMmultus® HiP2 Plasmid Process Pack 8000-8000 mL (1x DEAE 1011.5114-2, 1x C4 HLD 1011.8136-2)
101.0012-2	CIMmultus® HiP2 Plasmid Process Pack 8-8 mL cGMP Compliant (1x DEAE 901.5114-2, 1x C4 HLD 901.8136-2)
101.0017-2	CIMmultus® HiP2 Plasmid Process Pack 40-40 mL cGMP Compliant (1x DEAE 914.5114-2, 1x C4 HLD 914.8136-2)
101.0013-2	CIMmultus® HiP2 Plasmid Process Pack 80-80 mL cGMP Compliant (1x DEAE 911.5114-2, 1x C4 HLD 911.8136-2)
101.0018-2	CIMmultus® HiP2 Plasmid Process Pack 400-400 mL cGMP Compliant (1x DEAE 924.5114-2, 1x C4 HLD 924.8136-2)
101.0014-2	CIMmultus® HiP2 Plasmid Process Pack 800-800 mL cGMP Compliant (1x DEAE 921.5114-2, 1x C4 HLD 921.8136-2)
101.0014-6-2	CIMmultus® HiP2 Plasmid Process Pack 800-800 mL cGMP Compliant (1x DEAE 921.5114-6, 1x C4 HLD 921.8136-2)
BIA-101.0014-6-6	CIMmultus® HiP2 Plasmid Process Pack 800-800 mL cGMP Compliant (1x DEAE 921.5114-6, 1x C4 HLD 921.8136-6)
101.0019-2	CIMmultus® HiP2 Plasmid Process Pack 4000-4000 mL cGMP Compliant (1x DEAE 934.5114-2, 1x C4 HLD 934.8136-2)
101.0015-2	CIMmultus® HiP2 Plasmid Process Pack 8000-8000 mL cGMP Compliant (1x DEAE 931.5114-2, 1x C4 HLD 931.8136-2)

# Peripherals & Accessories

## Connectors and adapters for CIMmultus<sup>®</sup> Columns

CIMmultus<sup>®</sup> 1, 4, 8 mL (non-GMP)



10 - 32 coned



10 - 32 coned male to

- 5/16 - 24 coned female, Material: PEEK

CIMmultus<sup>®</sup> 4 and 8 mL cGMP compliant and all CIMmultus<sup>®</sup> 40 mL and larger



25 mm TC

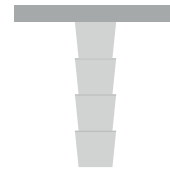


25 mm TC to

- 10 - 32 coned, Material: SS or PEEK
- 5/16 - 24 coned, Material: SS or PEEK
- 5/16 - 24 flat, Material: PEEK



25 mm TC



25 mm TC to

- HOSE-TAIL 1/2" - 3/8", Hose OD | ID = 9.5 | 6.5 mm, Material: SS
- HOSE-TAIL 1/2" - 1/4", Hose OD | ID = 6.5 | 3.4 mm, Material: SS

Order Code	Description
422.0913	Adapter 10-32 coned male to 5/16"-24, coned female, (pack of 2)
422.0901	Adapter PP, 5/16"-24 flat female to 5/16"-24 cone male (pack of 2)
422.0908	Adapters PEEK, TC 25 mm to 10-32 UNF cone female (pack of 2)
422.0911	Adapters PEEK, TC 25 mm to 5/16"-24 flat female (pack of 2)
422.0907	Adapters PEEK, TC 25 mm to 5/16"-24 UNF cone female (pack of 2)
422.0900	Adapters PP, 10-32 female to 5/16"-24 cone male (pack of 2)
422.0912	Adapters PP, 5/16"-24 cone female to 5/16"-24 cone male (pack of 2)
422.0904	Adapters SS, TC 25 mm to 10-32 cone female (pack of 2)
422.0905	Adapters SS, TC 25 mm to 5/16"-24 cone female (pack of 2)
422.0910	Adapters TC 25 mm HOSE-TAIL 1/2" - 1/4", Hose OD/ID=6.5/3.4 mm, Material 316 L (pack of 2)
422.0909	Adapters TC 25 mm HOSE-TAIL 1/2" - 3/8", Hose OD/ID=9.5/6.5 mm, Material 316 L (pack of 2)
422.0903	Blind fitting for autoclaving 80 mL cGMP compliant SS
422.0902	Blind fitting for autoclaving 8 mL cGMP compliant SS

Autoclaving adaptors for stainless steel CIM columns with 25 mm TC (SS: 8, 80 mL) available on request.

**Germany**

Sartorius Stedim Biotech GmbH  
August-Spindler-Strasse 11  
37079 Göttingen  
Phone +49 551 308 0

**Slovenia**

Sartorius BIA Separations  
Mirce 21  
5270 Ajdovščina  
[www.biaseparations.com](http://www.biaseparations.com)

**For more information about Monolithic Chromatography Columns, visit**

[www.sartorius.com/en/products/process-chromatography/chromatography-consumables/monolithic-chromatography](http://www.sartorius.com/en/products/process-chromatography/chromatography-consumables/monolithic-chromatography)

**For more information about Vaccine Development, visit**

[www.sartorius.com/en/applications/biopharmaceutical-manufacturing/vaccines/vaccine-development](http://www.sartorius.com/en/applications/biopharmaceutical-manufacturing/vaccines/vaccine-development)